

Pedestrian Rights: 100 years of oppression Seminar, 2 September 2002

PEDESTRIAN RIGHTS

Let's walk the walk while we talk the talk!

Presentation by Ruth Shean

Demographics

- 381,000 people with disabilities
- 20% of the population
- 93% live in the community
- Age related - 4% of children under 5 has a disability; 84% of people 85+
- Currently 204,000 people 65+
- By 2021, nearly 400,000 people 65+
- 10% of the population - will be 16% in 2021

Greater use of pedestrian facilities

- People with disabilities/elderly people less likely to drive
- Greater awareness about the importance of keeping fit - especially relevant for people with disabilities/elderly
- Encourage people to get outside [find 30!]

Why?

- Federal Disability Discrimination Act 1992
- State Disability Services Act [Disability Service Plan requirement] 1993
- Good business

Let's go for a walk

- Footpaths
- Ramps, steps and lifts
- Crossings
- Signs
- Handrails and hand controls
- Seating

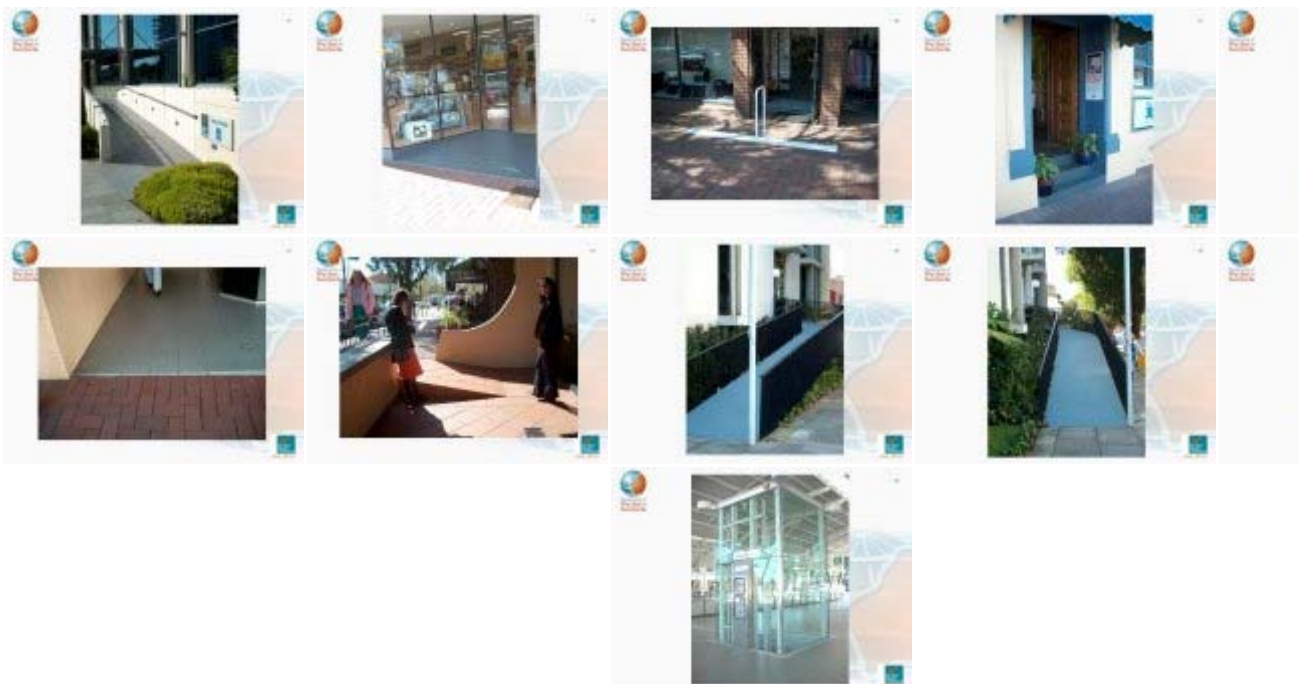
Footpaths

- Smooth, hard and continuous
- Obstruction free
- Appropriate gradients and camber
- Appropriate use of tactile indicators
- Contrasting colours to delineate changes
- Management of use conflict in shared spaces
- Uncluttered building line



Ramps, steps and lifts

- Well designed kerb ramps
- Contrasting colour to delineate changes
- Appropriate gradients
- Ramps wherever there are steps
- Handrails for steps and ramps
- Try to avoid long ramps
- Lifts may be your only option



Crossings

- Appropriate use of tactile indicators
- Clearly delineated paths of travel
- Contrasting colour to delineate change
- Well designed kerb ramps
- Accessible road crossings



Signs

- Well lit
- Non reflective
- Informative
- Plain English
- Good height
- Pictorial



Hand rails and hand controls

- Should accompany all ramps and stairs
- Can be useful at crossings
- Must be a good diameter



Seating

- Should be room for a person in a wheelchair next to seating
- Arms rests can assist elderly people
- Seating should be available

